

Harshbarger

# Descriptions of Polyps and Epidermal Papillomas in Three Bivalve Mollusk Species



Harshbarger

John C. Harshbarger is with the Registry of Tumors in Lower Animals, National Museum of Natural History, Smithsonian Institution, Washington, DC 20560.

JOHN C. HARSHBARGER

## CASE I: HYPERPLASTIC POLYP ON THE FOOT OF A FRESHWATER MUSSEL, *ANODONTA CALIFORNIENSIS*

Polypoid growths of the foot, mantle, and pericardium have been found repeatedly in bivalve molluscs. These growths (reviewed by Pauley, 1969; Marks, 1972) generally are composed of essentially normal tissues and have been variously interpreted.

Forty-seven (15.7 percent) of 299 freshwater mussels, *Anodonta californensis*, with foot lesions were collected by Gilbert B. Pauley from the Columbia River on the Hanford Energy Research Center Development Administration Reservation in 1965 or 1966 and have been previously described (Pauley, 1967a, b, 1968). A representative specimen from this series was contributed to the Registry of Tumors in Lower Animals (No. TLA 142).

The growth was 3-4 mm in diameter and extended slightly more than 2 mm beyond the surface of the foot. The gross surface, as seen with a hand lens, had a slightly sculptured texture, similar to that of the normal areas of the foot. The growth was very slightly contracted at the point of attachment.

Microscopically the growth appeared to be an extension of normal foot elements (Fig. 1). Muscle fasciculi from the normal area extended into the base of the growth and normal muscle cut in three planes was the principal tissue throughout (Fig. 2). The basic arrangement was preserved except that as the muscle fibers fanned out from the base they were considerably further apart and the resulting space was largely occupied by fibrous connective tissue. Blood vessels were normal as regards

size, frequency, and the thickness of the vessel walls. The peripheral one-fourth of the growth was heavily occupied by normal elongate glands, filled with basophilic granular product, extending up into the surface papillae (Fig. 3). The papilliferous surface was composed of a normal simple ciliated columnar epithelium (Fig. 4).

The cause of these lesions is unknown, but the basically normal arrangement of normal cell types rules out neoplasia. The two tissues that had to have proliferated to provide the extra bulk of covering were the fibrous connective tissue and the surface epithelium. The fanning out of muscle from the point of attachment suggests that muscle was pulled into the area as if an injury had caused the surface to

buckle outwardly. The remaining spaces, according to this model, were then filled with scar tissue and the surface epithelium and associated gland cells proliferated normally.

In conclusion, these lesions are interpreted as traumatic polyps composed of muscle and scar tissue overlain with normal epithelium and associated gland cells.

## CASE II: BENIGN MESENCHYMAL POLYP ON THE MANTLE OF A PACIFIC OYSTER, *CRASSOSTREA GIGAS*

A Pacific oyster, *Crassostrea gigas*, with a large pedunculated growth attached to the mantle was discovered in Little Skookum Inlet, Puget Sound, Wash. The specimen was contributed



Figure 1.—Polypoid growth extending from the foot. 2.5x.

H. Haskin, 1970. "Mussel... it and susceptible oyster... Natl. Shellfish Assoc.  
med, and A. Rosenfield... of *Minchima nelsoni*... of Chesapeake Bay... Shellfish Assoc.  
Fine structure of the... *Minchima nelsoni* (Haplo... diidae). J. Invertebr...  
anan, and G. B. Chagnon... of the fine structure... of *Minchima* (Haplo... diidae). J. Parasitol...  
Sindermann, 1966. "The... in middle Chesapeake... Natl. Shellfish Assoc.  
to, and A. Rosenfield... some microparasites... eake Bay, 1965-1966... shellfish. Assoc. 56: 8-11  
I. A. Rosenfield, 1967... mmercially important... uska and Crustacea... Fish. Bull. 66: 67-71  
noral factors and... Maramorosch and B... vertebrate immunology... Press, N.Y.



Figure 2.—Fasciculi of normal appearing muscle fibers cut in all planes fan out from the base of the growth. 10 X.

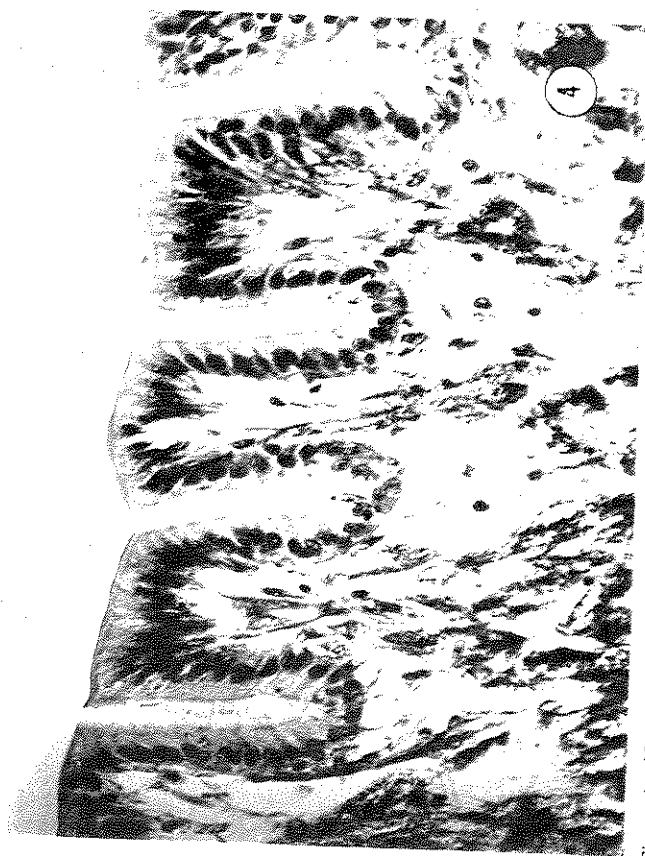


Figure 4.—Normal appearing, simple, columnar, ciliated epithelial border of tumor. 100 X.

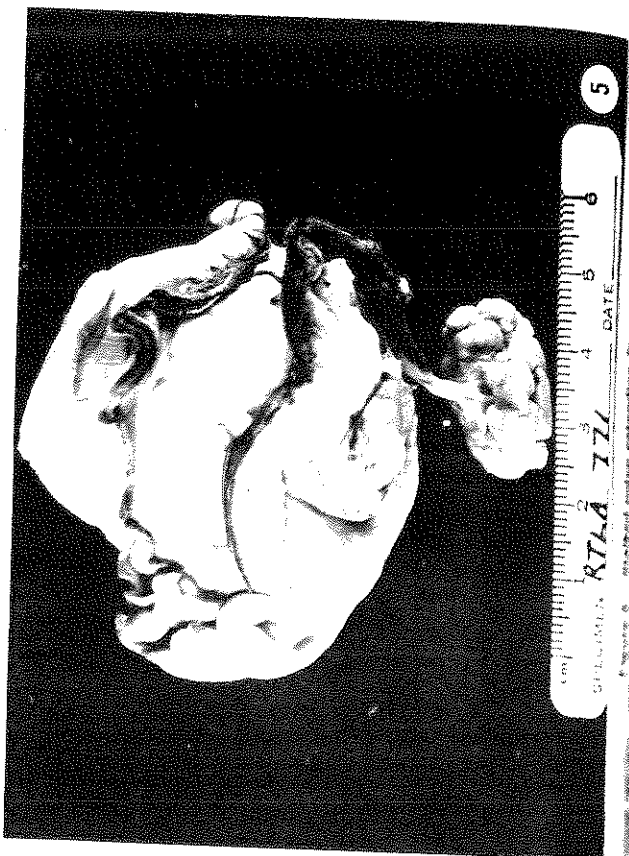
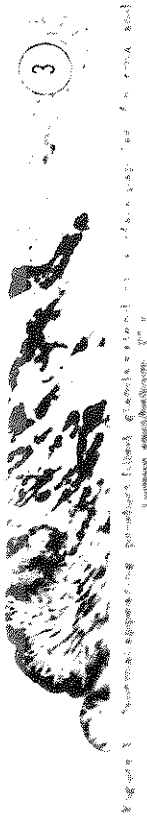


Figure 3. Normal appearing parathyroid gland. (Continued from p. 26, area and  
 continued adjacent page.)

3



ries Review

cm  
 877A 777  
 DATE  
 5

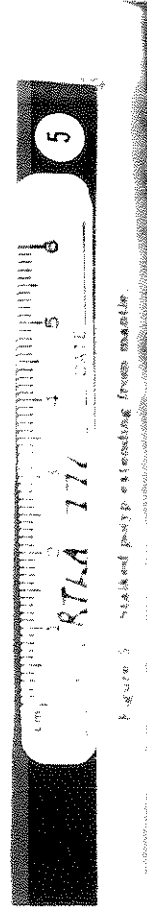
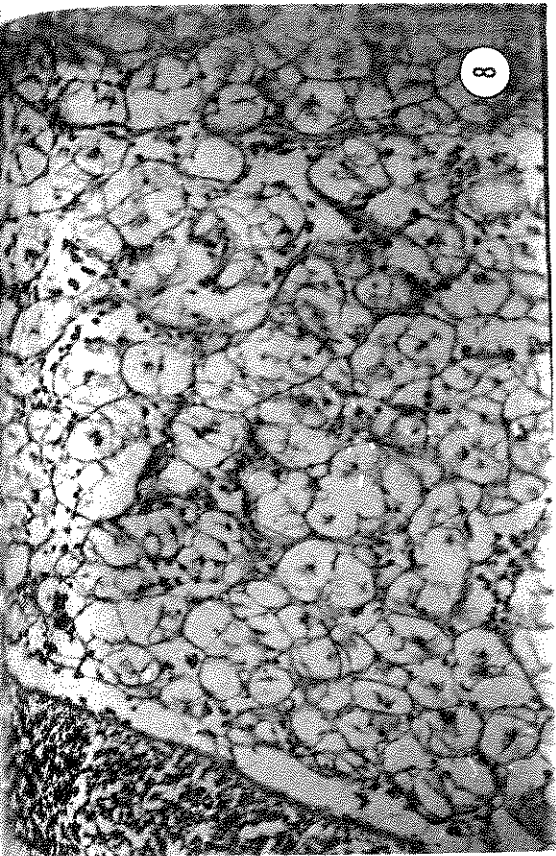


Figure 5. Striated pepsin extending from mantle.



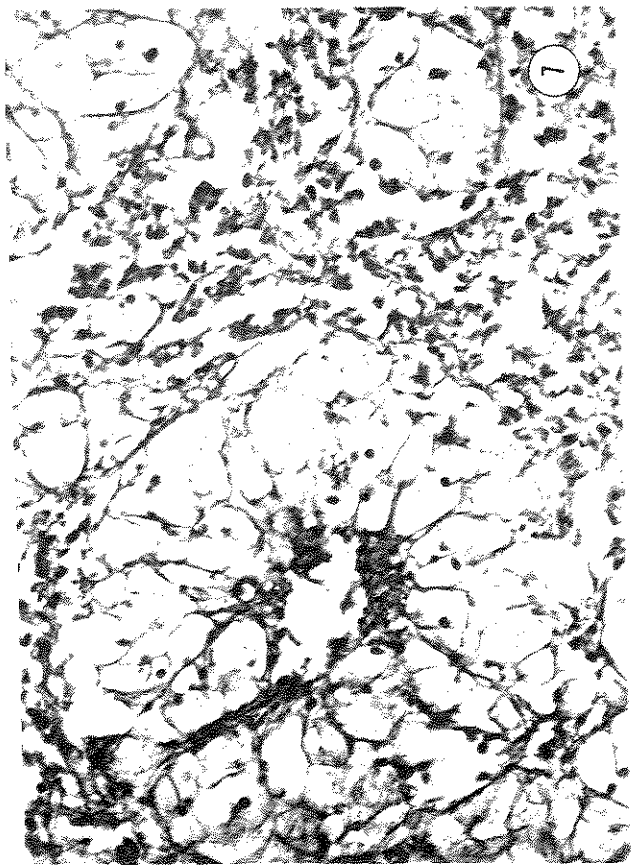
6

Figure 6.—Histological overview of one lobe showing Leydig component (light areas), fibrous component (darker areas), and cryptal epithelial surface. 4X.



8

Figure 8.—Normal Leydig (vesiculated connective) tissue. 40X.



7

Figure 7.—Pseudorosette of Leydig tissue within fibrous stroma. 100X.



9

Figure 9.—Nodular growth with granular texture attached to mantle.

October 1976



Figure 12.—Numerous mitotic figures indicate rapid growth. 160X.



Figure 10.—Growth resembling clusters of grapes attached to mantle.



to the R  
Animals  
Dennison  
vision. It  
March 1  
study she  
previous  
(Sparks,  
and Che  
(Smith, 1  
a firm bu  
growth 2  
the mant  
in length  
of some r  
ysis, ves  
were rea  
major co  
cells, wh  
bunches,  
blood ve  
nuclei st  
panded  
gesting t  
had been  
The tum  
from the  
tissue co  
next to t  
men (F)  
supporte  
fibrous  
consiste  
terspers  
normal r  
in some  
any of th  
In con  
be comp  
site, wel  
nective  
dant, po  
enclosed  
cryptic e  
appearin  
benign v  
C  
PAPII  
CRASS  
During  
rock oy  
calis, w  
from ma  
by Peter  
tions w  
Shoalhav  
(Wolf, 1  
less than  
October

the Registry of Tumors in Lower Animals (RTLA 771) by John G. ... of the Olympic Research Di- ... ITT Rayonier, Incorporated, in ... March 1973. Gross and histological ... showed it to be similar to lesions ... previously described in *C. gigas* ... Sparks, et al., 1964; Sparks, Pauley, ... Chew, 1969) and in *C. virginica* ... (Smith, 1934). The gross specimen had ... but pliable, dull white, lobulated ... growth 2.5 cm in diameter attached to ... the mantle by a slender peduncle 1 cm ... length (Figs. 5, 6). Despite the loss ... some microscopic detail due to autol- ... vesicular connective tissue cells ... readily discerned to comprise the ... component of the growth. These ... which were arranged singly, in ... and in pseudorosettes around ... vessels (Fig. 7) had tiny central ... surrounded by large fully ex- ... vesiculated cytoplasm suggesting that a large amount of glycogen ... been present prior to processing. ... tumor cells were indistinguishable ... the normal vesicular connective ... cells located in the usual position ... to the digestive gland of the speci- ... (Fig. 8) although they were ... by a considerably larger ... stroma. The epithelial lining ... of simple columnar cells in- ... with goblet cells similar to ... mantle except for deep crypts ... areas. Mitoses were not seen in ... of the components.

In conclusion, the lesion appeared to ... composed of slow-growing, noninva- ... well differentiated vesicular con- ... tissue associated with abun- ... possibly reactive, fibrous tissue ... by a simple, occasionally ... epithelium composed of normal ... cells. It is interpreted as a ... vesiculo-epithelial polyp.

**CASE III: EPITHELIAL  
PAPILLOMAS OF THE MANTLE  
OF ROCK OYSTERS,  
CRASSOSTREA COMMERCIALIS**

During the last 11 years over 140 ... oysters. *Crassostrea commer-* ... with papillary growths arising ... mantle epithelium were collected ... H. Wolf from several popula- ... within the Hawkesbury and ... Seven River estuaries of Australia ... (1974). This is a prevalence of ... 0.001 percent which is prob-

ably low since the survey was con- ducted by oyster shuckers incidental to their regular duties. Both estuaries drain agricultural land, support moderate pleasure boating, and one receives effluent from a pulp mill several miles upstream but other than that, neither estuary receives industrial effluent. Limited electron microscopy has not revealed viruses. So far attempts to transplant the growths have not been successful (Wolf, 1976).

Two whole specimens contributed by Wolf to the Registry of Tumors in Lower Animals (RTLA 160 and 162) had features similar to those already described (Wolf, 1969, 1971, 1976). Grossly RTLA 162 was a nodular growth with a granular texture measuring 8 x 5 x 4 mm (Fig. 9) while RTLA 160, which was 7 x 5 mm, had the appearance of several clusters of various sized grapes (Fig. 10).

Microscopically the lesions were continuous with normal mantle epithelium (Fig. 11). However, tumor cells were more basophilic and exhibited a higher than normal nucleus to cytoplasm ratio. Mitoses were extremely numerous (Fig. 12), 28 being counted in one 400x field. This rapid growth had resulted in a random buckling which produced a plexiform pattern of paired epithelial cells separated by a thin fibrous stroma (Fig. 13). The growths were focal in nature but strands of muscle that normally underlie muscle epithelium had been drawn into the tumor confirming local invasion. Exfoliated necrotic epithelial cells associated with macrophages were abundant in some areas. These lesions were

interpreted as epithelial papillomas of the mantle.

**LITERATURE CITED**

Pauley, G. B. 1967a. Four freshwater mussels (*Anodonta californiensis*) with pedunculated adenomas arising from the foot. *J. Invertebr. Pathol.* 9:459-466.

\_\_\_\_\_. 1967b. A tumorlike growth on the foot of a freshwater mussel (*Anodonta californiensis*). *J. Fish. Res. Board Can.* 24:679-682.

\_\_\_\_\_. 1969. A critical review of neoplasia and tumorlike lesions in mollusks. In *Neoplasms and related disorders of invertebrate and lower vertebrate animals*. Natl. Cancer Inst. Monogr. 31:509-539.

Smith, G. M. 1934. A mesenchymal tumor in an oyster (*Ostrea virginica*). *Am. J. Cancer* 22:838-841.

Sparks, A. K. 1972. Tumors and tumorlike conditions in invertebrates. Phylum Mollusca. In *Invertebrate pathology. Noncommunicable diseases*, p. 304-357. Academic Press, N.Y.

Sparks, A. K., G. B. Pauley, R. R. Bates, and C. S. Sayce. 1964. A mesenchymal tumor in a Pacific oyster, *Crassostrea gigas* (Thunberg). *J. Insect Pathol.* 6:448-452.

Sparks, A. K., G. B. Pauley, and K. K. Chew. 1969. A second mesenchymal tumor from a Pacific oyster (*Crassostrea gigas*). *Proc. Natl. Shellfish. Assoc.* 59:35-39.

Wolf, P. H. 1969. Neoplastic growth in two Sydney rock oysters, *Crassostrea commercialis* (Iredale and Roughley). In *Neoplasms and related disorders of invertebrate and lower vertebrate animals*. Natl. Cancer Inst. Monogr. 31:563-573.

\_\_\_\_\_. 1971. Unusually large tumor in a Sydney rock oyster. *J. Natl. Cancer Inst.* 46:1079-1084.

\_\_\_\_\_. 1974. Integumentary neoplasms in oysters. In *Abstracts: XIth International Cancer Congress, 20-26 October 1974, Florence (Italy), Vol. 2*, p. 171.

\_\_\_\_\_. 1976. Studies on the geographical distribution, etiology and transmission of integumentary epitheliomas in rock oysters from Australian estuaries. In *F. Homburger (editor), Progress in experimental tumor research, Vol. 20, Neoplasms in aquatic animals as indicators of environmental carcinogens*. Karger, Basel.

MFR Paper 1209. From *Marine Fisheries Review*, Vol. 38, No. 10, October 1976. Copies of this paper, in limited numbers, are available from D825, Technical Information Division, Environmental Science Information Center, Washington, DC 20235. Copies of *Marine Fisheries Review* are available from the Superintendent of Documents, U.S. Government Printing Office, Washington, DC 20402 for \$1.10 each.

